



If you are including a legacy in your Will please remember to use our full name, **National Migraine Centre, formerly The City of London Migraine Clinic** our registered charity number 1115935 and the registered address:
National Migraine Centre
22 Charterhouse Square
London
EC1M 6DX

For more detailed guidance on legacies, including Codicil forms and suggested wordings, please see our website:
NationalMigraineCentre.org.uk

We are immensely grateful to those supporters who have already made provisions for the National Migraine Centre in their Wills.

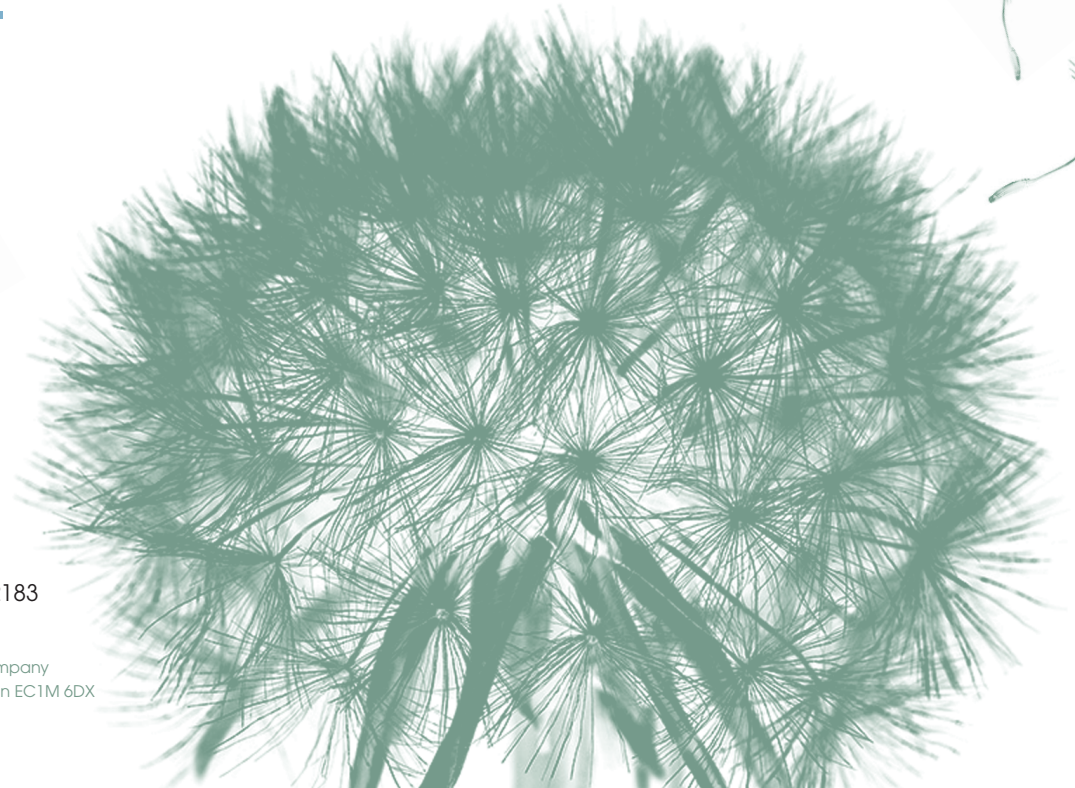
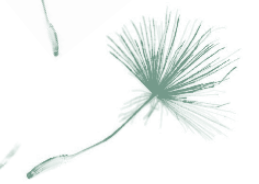
Thank you for your wonderful support.

“Extraordinary results after years of suffering. I feel transformed.”

Rachael Vickers, aged 25

Leaving a legacy

How you can help us with a gift in your Will



National Migraine Centre
 22 Charterhouse Square, London, EC1M 6DX T: 020 7251 3322 F: 020 7490 2183
 E: info@NationalMigraineCentre.org.uk W: NationalMigraineCentre.org.uk

National Migraine Centre, formerly The City of London Migraine Clinic, Registered charity no. 1115935. Company Limited by Guarantee (England and Wales) no. 5846538. Registered Office 22 Charterhouse Square London EC1M 6DX



Why a gift in your Will can help us

Since the National Migraine Centre (formerly *The City of London Migraine Clinic*) was founded over 30 years ago, we have treated more than 45,000 people with migraine, cluster headaches and other primary headaches. We have helped countless more through our education and research. This might sound like a lot, but if you consider that migraine alone affects around 6 million people in the UK, you can see how much more there is still for us to do. To continue this important work, we will need your sustained support for as long as possible.

- **We want to be here in the future when another person, having already tried different treatments and seen multiple doctors, takes one more look and finds us.**
- **We want to continue as a clinic, enabling anyone to seek treatment, regardless of their income.**
- **We want to develop our research, because the more we know, the more we can help.**
- **We especially want to expand our education programme for healthcare professionals so that more doctors can provide better treatments to more people.**

As a small organisation, each and every donation we receive is important. Legacies do not need to be large in order to make a difference and many smaller gifts can help us achieve our goals. Each one will be deeply appreciated and put to good use.

Legacies are a way you can support us in the future. Leaving a gift in your Will is something everyone can do, and can be easily achieved in a way to suit your particular circumstances. It will also help reduce your inheritance tax liability. Legacies are important for charities, with some getting as much as a third of their donations in this way. The National Migraine Centre has provided a service for over 30 years and we are delighted to have recently received our first legacy.

Helping for the future

While any gift to the National Migraine Centre will benefit all of our patients, it can make a real difference to your children and their children's lives, as migraine has a genetic element. Your generous gift will help us to improve the lives of future generations of migraine sufferers.

“The consultation was excellent. There is no price to be put on the treatment I received.” *Jonathan Clarke, aged 54*

What a legacy can provide

- **£500 could train 5 GPs in diagnosis and treatment of primary headaches.**
- **£5,000 would allow us to see 20 new patients who are unable to afford a donation.**
- **£100,000 would cover all the costs of keeping the National Migraine Centre running for 3 months.**

How to make a Will

If you wish to leave a legacy this should be incorporated into, or added to, your Will. To add a legacy to an existing Will you can use the Codicil form provided on our website.

To make a Will most people contact a solicitor which ensures that all the legal formalities are correctly followed and that your Will is valid. A valid Will gives you peace of mind that your exact wishes will be carried out in the way you intended.

When including a legacy in your Will it is important that you include our full name, address and charity number (see the back page of this leaflet) to prevent any uncertainty about which charity is the intended recipient of the legacy.

How a legacy can reduce your inheritance tax

Legacies to a charity are tax free and if your estate is estimated to exceed £325,000 (for the tax year 2011/12), such a legacy will reduce the amount of inheritance tax the estate will need to pay. Inheritance tax is currently applied at 40% of the value of your estate above this threshold. This means that if the value of your estate is over £325,000 and you gave £1,000, it would cost the estate only £600.

If leaving more than 10% of your estate to charity, your overall inheritance tax rate will be reduced from 40% to 36%.

When leaving a legacy there are a number of options you can choose to make either a pecuniary or a residuary legacy. A pecuniary legacy is a set sum of money. A residuary legacy is when you give the remainder or a percentage of the estate. This ensures that, regardless of the ultimate value of the estate, your loved ones are taken care of, and at the same time you can leave a legacy for charity. Leaving a percentage also means you do not have to alter your Will if your circumstances change.